

UNIT, DIRECT SUPPORT, AND GENERAL SUPPORT MAINTENANCE  
REPAIR PARTS AND SPECIAL TOOLS LIST  
TRUCK, 5-TON, 6X6, M809 SERIES TRUCKS (DIESEL)

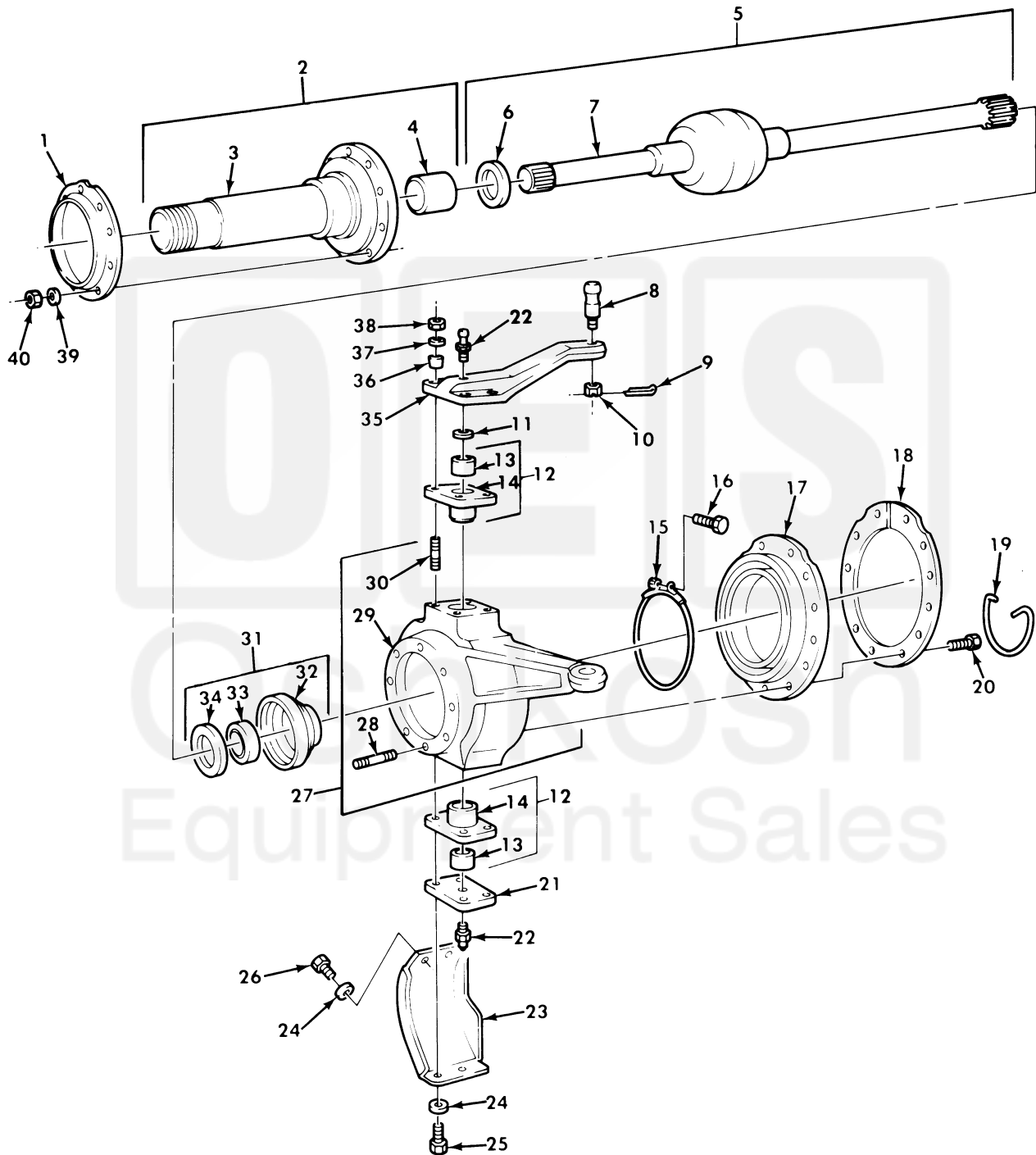


Figure 158. Spindle Shaft Assembly, Universal Shaft, and Knuckle Assembly.

(1) ITEM NO	(2) SMR CODE	(3) NSN	(4) CAGEC	(5) PART NUMBER	(6) DESCRIPTION AND USABLE ON CODE (UOC)	(7) QTY
GROUP 1004 STEERING AND LEARNING WHEEL MECHANISM						
FIG. 158 SPINDLE SHAFT ASSEMBLY, UNIVERSAL SHAFT, AND KNUCKLE ASSEMBLY						
1	PAOZZ	2520-00-740-9551	78500	3286G163	DEFLECTOR, DIRT AND.....	2
2	PAOZF	2530-00-734-6982	19207	7346982	SPINDLE, WHEEL, DRIVI.....	2
3	XAOZZ		19207	8758276	. SPINDLE.....	1
4	PAOZZ	3120-00-537-0614	19207	7346983	. BEARING, SLEEVE.....	1
5	PAOZZ	2520-00-734-6985	19207	7346985	SHAFT, AXLE, AUTOMOTI LEFT FRONT AXLE	1
5	PAOZZ	2520-00-734-6984	19207	7346984	SHAFT, AXLE, AUTOMOTI RIGHT FRONT	1
AXLE.....						
6	PAOZZ	5310-00-033-6007	78500	1229T1346	. WASHER, FLAT.....	1
7	XAOZZ		19207	10883182	. SHAFT, AXLE LEFT.....	1
7	XAOZZ		19207	10883183	. SHAFT, AXLE RIGHT.....	1
8	PAOZZ	5307-00-734-6980	19207	7346980	STUD, BALL LEFT.....	1
8	PAOZZ	5307-00-483-1105	19207	11664599	STUD, BALL RIGHT.....	1
9	PAOZZ	5315-00-298-1481	96906	MS24665-357	PIN, COTTER.....	2
10	PAOZZ	5310-00-835-2140	96906	MS35692-69	NUT, PLAIN, SLOTTED, H.....	2
11	XDFZZ		78500	1244B548	WASHER, FLAT 0.125.....	V
11	PAFZZ	5310-01-054-2568	19207	8758280	WASHER, FLAT 0.135.....	V
11	PAFZZ	5310-01-128-1592	19207	8758281	WASHER, FLAT 0.145.....	V
11	PAFZZ	5310-01-134-0209	19207	8758282	WASHER, FLAT 0.155.....	V
11	PAFZZ	5310-01-134-5791	19207	8758283	WASHER, FLAT 0.165.....	V
11	PAFZZ	5310-01-231-9281	19207	8758284	WASHER, FLAT 0.175.....	V
12	PAFFH	2530-00-734-6971	19207	7346971	SLEEVE ASSY.....	4
13	PAFZZ	3120-00-288-1889	19207	7346972	. BEARING, SLEEVE.....	1
14	XAFZZ		19207	8758253	. SLEEVE.....	1
15	PAOZZ	4730-01-118-5972	19207	12300575	CLAMP ASSEMBLY.....	2
16	PAOZZ	5305-00-143-3266	96906	MS27039-0825	SCREW, MACHINE PART OF KIT P/N 5704510.....	2
17	PAOZZ	2530-00-832-7123	92679	98883R91	BOOT, VEHICULAR COM PART OF KIT P/N 5704510.....	2
18	PAOZZ	2520-00-734-6975	19207	7346975	RING, DIFFERENTIAL C.....	2
19	MOOZZ		80244	22W1642-125	WIRE, NONELECTRICAL MAKE FROM WIRE, P/N MS20995F41.....	2
20	PAOZZ	5305-00-551-5097	96906	MS35265-94	SCREW, MACHINE.....	24
21	PAFZZ	5340-00-734-6974	19207	7346974	COVER, ACCESS.....	2
22	PAOZZ	4730-00-050-4208	96906	MS15003-1	FITTING, LUBRICATION.....	4
23	PAOZZ	2530-00-734-6977	19207	7346977	GUARD, BRUSH LEFT SIDE.....	1
23	PAOZZ	2530-00-734-6978	19207	7346978	GUARD, BRUSH RIGHT SIDE.....	1
24	PAOZZ	5310-00-820-6653	96906	MS35338-50	WASHER, LOCK.....	12
25	PAOZZ	5305-00-724-7223	80204	B1821BH063C225N	SCREW, CAP, HEXAGON H.....	8
26	PAOZZ	5305-00-724-7219	80204	B1821BH063C125N	SCREW, CAP, HEXAGON H.....	4
27	PAFFF	2530-00-734-6815	19207	7346815	SPINDLE, WHEEL, DRIVI LEFT SIDE.....	1
27	PAFFF	2530-00-006-7469	19207	7346816-1	SPINDLE, WHEEL, DRIVI RIGHT SIDE.....	1
28	PAOZZ	5307-00-734-6811	89346	98866R1	. STUD, PLAIN.....	10
29	PAFZZ	3040-00-177-7906	19207	8758352	. HOUSING, MECHANICAL LEFT SIDE.....	1
29	XAFZZ		19207	8758352-1	. HOUSING, FRONT AXLE RIGHT SIDE.....	1
30	PAFZZ	5307-00-734-6900	19207	7346900	. STUD, PLAIN.....	4
31	PAOOO	4320-00-734-6951	78500	A1244J556	SEAL ASSEMBLY, SHAFT.....	2
32	PAOZZ	5330-01-098-6668	19207	8758268	. RETAINER, OIL SEAL.....	1
33	PAOZZ	5330-00-145-8355	78500	A1805H60	. SEAL, PLAIN ENCASED.....	1